



Behind the Scenes at the Keller Heritage Center

Volume VI, Issue 2

April 2010

Stevens County Historical Society

Keller House Centennial Celebration June 12th!

The Stevens County Historical Society will host a party to celebrate the 100th birthday of the Keller House on June 12, 2010. The Keller House is located at 700 N. Wynne St. in Colville. The party will take place from 7:00 PM to 10:00 PM. There will be speakers, a period style show, musical entertainment, a brief skit and a cake design/decorating contest in which anyone is welcome to participate. There will be prizes for this contest, with the understanding that the cakes will be donated to the event and served to all who attend. Other refreshments will also be served. Guests are

encouraged to wear costumes of the era. Cake design contestants should RSVP to the Museum by calling 509-684-5968.

A Brief History of the Keller House

The history of the house actually begins back in New York in 1854, which is where and when J. Harry Young was born. In 1885 he came to Colville, already a successful businessman, owning and operating various businesses. Harry Young met Anna Helberg and in 1907 they were married. Harry had a beautiful home built on the hillside at 700 N.

Wynne St., overlooking the city of Colville. The house was completed in 1910. Harry Young passed away in 1914.

In the meantime, Louis G. Keller moved to Colville, arriving in 1907. He married Anna Young in 1915 and they lived in the home on Wynne St. This is when it became known as the Keller House. The Kellers had no children, so Louis bequeathed the home and its 7 3/4-acre estate to the city of Colville, to be used as a park.

Mark your calendar for June 12th and join us at 700 N. Wynne St.

Opening Day!!

May 1st is here all too early this year. It always seems like there will be plenty of time "over the winter" or "while we are closed" to do all that needs to be done. But there never is enough time. This year is no exception. Lots of work was done, but here we are open already and there's still so much to do. All we hoped for never does get done, but what does get done is always amazing and beyond what we expected.

There are some totally new displays and some refreshed and some with new store fronts. They are all terrific. Again, Katie Tolin and Connie Richart worked a lot on displays, not to mention what they did upstairs in cleaning and sorting.

Katie also caught up most of the backlog in accessioning of new acquisitions. Many of those things are now on display, including Mrs. Hofstetter's jelly jar, which the donor said she used every day on her table.

The Mayor of Colville, Mr. Dick Nichols, issued a proclamation declaring May as History Month in the city. This coincides with the national celebration of History Month.



Our Lovely Lady
Celebrates her 100th
Birthday

Inside this issue:

President's	2
Message	
Around the	2
Grounds	
Wi-Fi Hotspot!	2
Blackjack Mining	3
Cabin	
Do You Know?	3
Email Newsletter	2
Report	
Contact Us	4

Around the Grounds

by Marvin Ray

The grounds are slowly beginning to look great. Trees and bushes are almost trimmed and ready for the up and coming opening of the Museum and lower grounds. Most of the larger trees have never been pruned and trimmed properly. The east parking lot was almost filled to capacity and the city crews have hauled away the very large pile of brush, leaf and pine needles.

The upper ground have been made ready for the new mining display. The city crews have made two new railroad lines to a simulated mine entrance. We will have an old mine cabin plus all of the mining equipment moved from the lower grounds to west and north of the Carriage House. It will become a very nice-looking display.

A new basement doorway in the Keller House will be completed in the near future. The House will be repainted in a number of locations and the front porch will be repainted to put a final finish on the newly-remodeled porch floor. Some of the remodeling work may not be completed prior to the annual Opening.

New wood chips for the south side of the museum, will be replaced in the near future.

A great improvement of the grounds and the buildings will enhance the Museum's appearance.

President's Message

by Janet Thomas

I think each time I open my mouth a big thank you to volunteers should come out. So much is done by so many. We don't pay anybody who works on the museum, house, grounds, library or any of it. All of the work is done by dedicated people who love the history of our area. They do amazing work. They Clean, sort, help, guide, repair, clip, trim and everything else that is needed. Many, many talented people make the center work and make it the showplace that it is. So much is done behind the scenes that nobody will ever see the actual work. I am glad I don't have to pick the one outstanding volunteer, because I just couldn't, they are all so wonderful.

Volunteerism in the community is not as popular as it once was. So many

people enjoy the results of volunteers but don't want to participate in the work. This seems to be a trend all over the nation. Other museums and organizations are experiencing the same downturn in participation.

The air is buzzing with excitement about the celebration of the finishing of the Keller House in 1910. The centennial year is an exciting thing and we will be having a part on June 12. Keep your eyes and ears open for advertising of the event.

I see the deer population is still here. It looks like we will have fawns again this year. As pesky as they are, they are still popular with visitors and staff and a joy to see every day.

Thanks to Master Gardener Kay Smolden, we again have a well kept rose garden. It was originally placed where the Learning Center now is by a troop of Girl Scouts in loving support of Marian Garvey, long time President of the Historical Society. When the museum expansion occurred, it was moved to its current site. The weather and the pesky deer have taken its toll on it. It was revived about 5-6 years ago, but again fell to the elements and pets, but last year the work started in earnest to revive it. Kay worked last summer in cleaning and preparation. This year new roses were added along with the other work. We have high hopes of keeping it going this time. Thanks to Kay, we feel there is hope for the garden.

E-Mail Newsletter Report

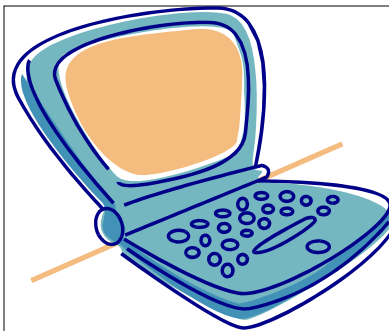
We've had several people sign up to get the Newsletter by email. This saves the Museum and Society a LOT of money in printing and postage costs. We want to encourage everyone who can do so to sign up to receive the Newsletter by email.

Some of the advantages of receiving the Newsletter electronically are: you'll get the photos and other pictorial content in color; you'll be able to simply click on any links to websites or email addresses; and you'll have a pdf file you can forward and share with friends. The pdf format is universally accepted and the Adobe Acrobat Reader is available for free!

All you need to do is email your address to schs@ultraplix.com.



SCHS is a WiFi Hotspot!!!



Many of you may not know it, but the Museum is now a WiFi hotspot! You can bring your laptop computer, sit out on the grounds and still be connected to the world. This will make the Museum a great place to while away a beautiful summer day, sitting at a picnic table, watching the resident deer, enjoying a pleasant breeze and chatting with far-away friends or even watching a movie. We are especially excited to be able to provide this service to our community and we hope that everyone who wishes to do so will take advantage of it.

More on Our Cabins....

1. We are still in the process of receiving the Historic Cabin in Chewelah. People in that area are coming forward wanting to be involved. We met with several of the family members recently in the cabin and video taped one of the Granddaughters of Dr. McPherson talking about the cabin and the family. The Chewelah Historical Society is also wanting to become involved. The President of the Society who runs the Chewelah museum has lots of ideas about what can be done. It will be exciting to work on this project and see what the best use of it will be and involve people in it.

2. A second cabin has been donated. It is from the Bureau of Land Management. It was on the site of the Blackjack Mine near Northport. The BLM has had it on a trailer and all set up to take to fairs and similar celebrations as a display and for people to go in.

Since it is set up for mining and is both similar to our other cabins on the grounds, it is also quite different it will be used to enhance the mining display here on the museum grounds. The mining display will be moved north and west of the carriage house. The raised bed for the railroad tracts and the ore carts is ready and the site of the cabin is prepared. Now the BLM needs to repair their trailer so it can be moved here. Mining was such a huge and interesting part of what has gone on here in Stevens County for over 150 years so it will be good to have a bigger and better mining display.

Do You Know????

We are looking for a few things. We had a research request asking about the date that the Rustic Inn at Park Rapids burned. We have talked to everyone we think should know, but apparently **not everyone because we still don't have the information.** If you do – give us a call. Pictures or newspaper articles would be good.



BLM Blackjack Mining Cabin



Inside view of the Blackjack Mining Cabin. You can see the handrails for the outside deck in the foreground.

Stevens County Historical Society
P. O. Box 25
Colville, WA 99114

RETURN SERVICE REQUESTED

Membership Application & Renewal

- New Membership
- Renewal (membership expires on date on label)

Choose One:

- Senior/Student/Disabled..... \$10.00
- Single Membership..... \$20.00
- Family Membership..... \$25.00
- Business Membership..... \$35.00
- Sustaining Membership..... \$100.00
- Patron Membership..... \$500.00
- Life Membership..... \$2,500.00

Payment Enclosed: \$ _____

Name: _____

Address: _____

Cut out, enclose payment and send to:

Stevens County Historical Society
P. O. Box 25
Colville, WA 99114

How to Reach Us

Office Hours: Mon., Wed., Fri. 10 AM to 1 PM

Phone/Message Number: (509) 684-5968

Email: schs@ultraplix.com

Website: www.stevenscountyhistoricalsociety.org

Address: P. O. Box 25
700 N. Wynne St., Colville, WA 99114

Museum Hours:

May & September: 1 PM to 4 PM
June, July, August: 10 AM to 4 PM (Mon.-Thurs.)
1 PM to 4 PM (Fri.-Sun.)

October through April: Museum & Keller House Tours
By Appointment.

Research Library Hours:

Wednesday: 10 AM to 1 PM
Thursday: 1 PM to 4 PM (limited services)

If you need other hours, please call the museum to arrange a different time.